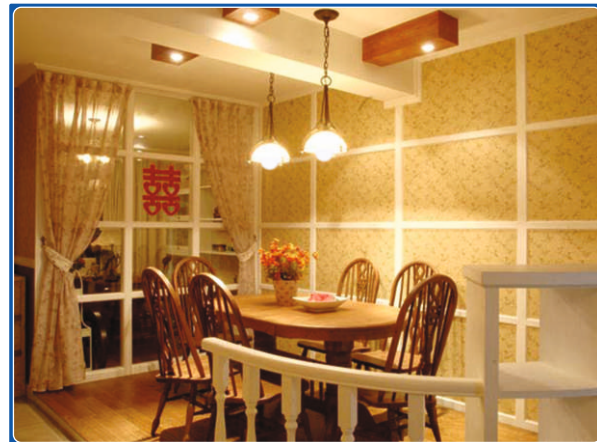


UJJVALA

LED BULB

CEMA UJJVALA LED bulbs with familiar looks and shape of coated incandescent lamp for versatile applications. UJJVALA LED bulbs deliver upto 100 lumens per watt system output offering 85% + savings over regular GLS lamps and 45% + savings over conventional CFL. An ideal replacement of GLS and CFL, comes with over voltage and over current protections.



Wattage	3W	5W	7W	9W	12W
Lumens	300	500	700	900	1200
CCT	6500°K	6500°K	6500°K	6500°K	6500°K
Beam angle	240°	240°	240°	240°	240°
Input Vg (AC)	220-240V	220-240V	220-240V	220-240V	220-240V
Power Factor	>0.3	>0.3	>0.9	>0.9	>0.9
Lamp Type	A50	A50	A60	A60	A65
H x D (mm)	88 x 50	88 x 50	112 x 60	112 x 60	116 x 65

Protections

- Over Voltage
- Over Load
- Over Current

Applications



TABLE FLOOR LAMP



READING LAMP



PENDANT FIXTURES



WALL SCONE



CEILING



CEILING FAN

Also Available in 3000°K